



Enterprise Architecture Development and Implementation

Engagements Process

Created in April 2015

© The OneWayForward Inc. All Rights Reserved.

<http://www.onewayforward.com>

Enterprise Architecture Development and Implementation Engagements Process

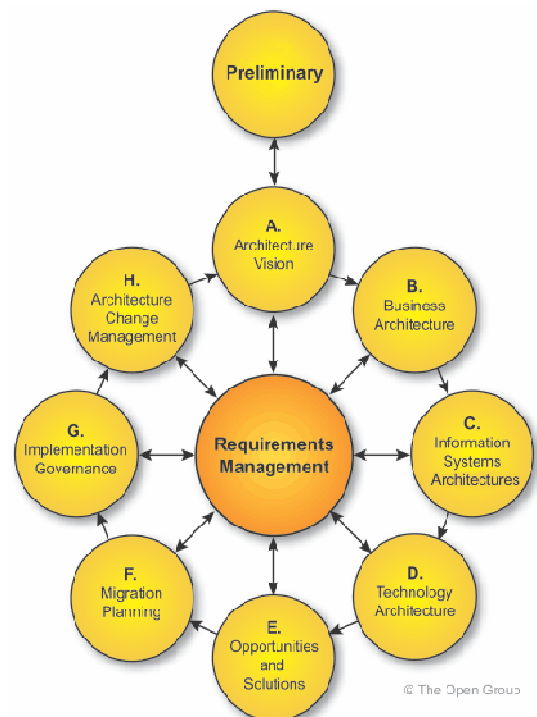
The OneWayForward Inc. provides consultation services related to Enterprise Architecture development and implementation for customers who target business transformation to achieve their strategic goals.



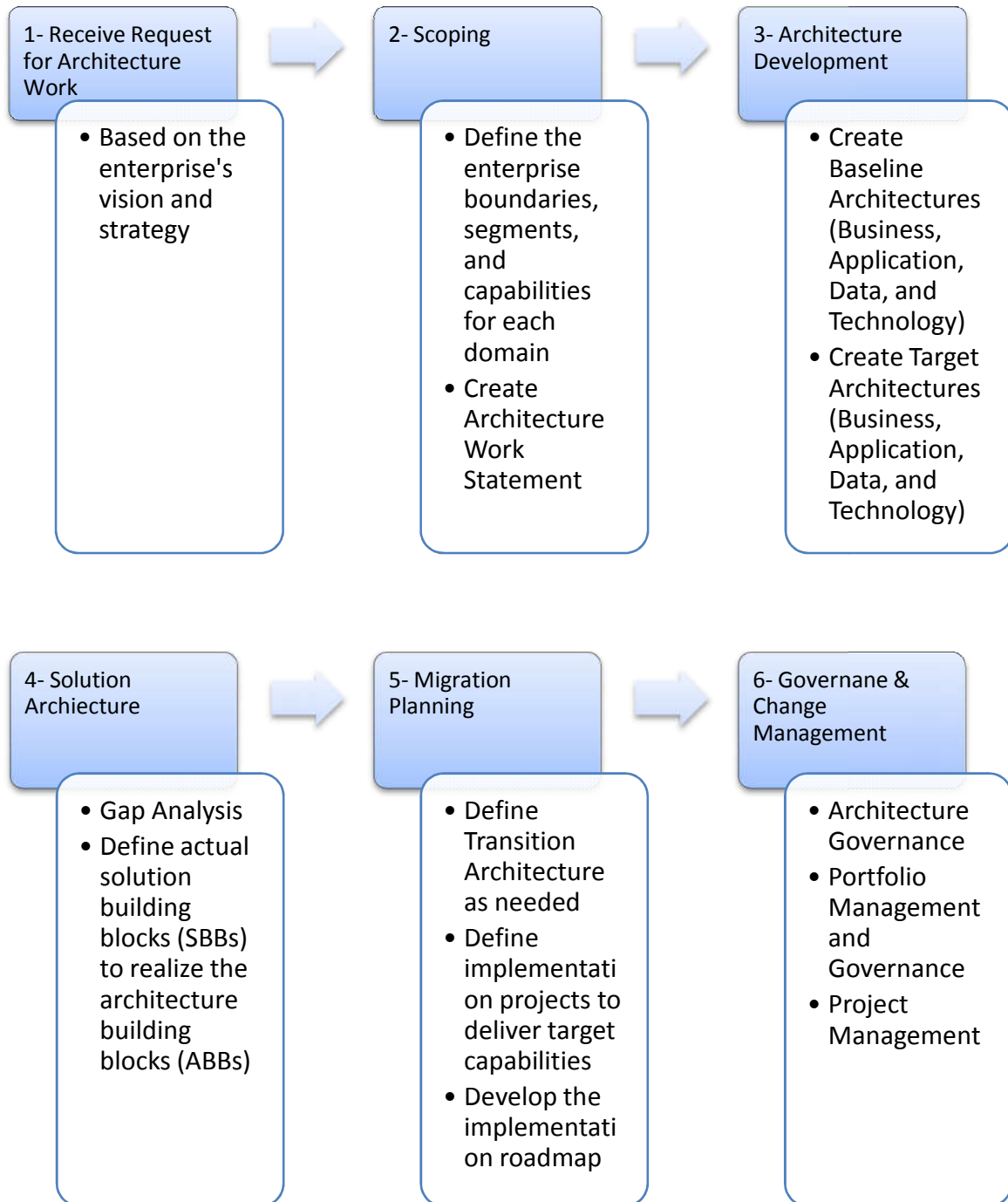
Our certified and experienced enterprise architects apply the Architecture Development Method (ADM) defined in the TOGAF framework to develop the enterprise architecture on four domains:

- Business Architecture
- Application Architecture
- Data Architecture
- Technology Architecture

We help our customers starting from the Preliminary Phase in building Enterprise Architecture if none is present in the organization, moving to clearly identifying the Architecture Vision based on the business strategic vision and goals, through architecture development on the four domains, to solutions architecture, migration planning, and implementation projects to delivery of architecture, all guided by architecture governance activities and change management process.

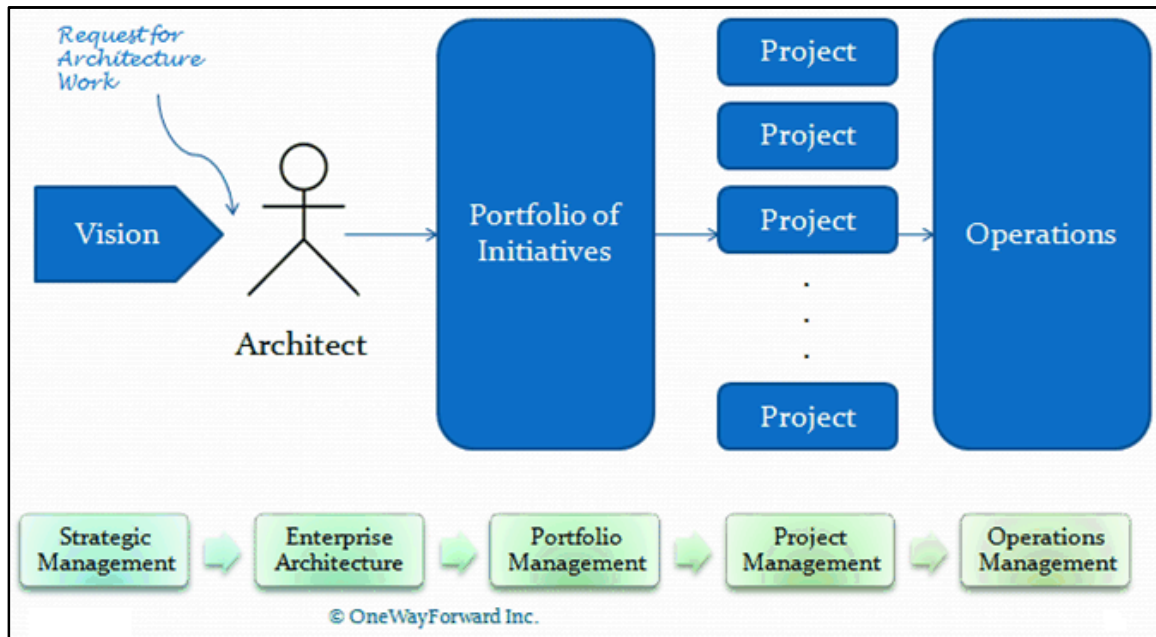


Our Engagements Process is as follows:



Integration with other frameworks:

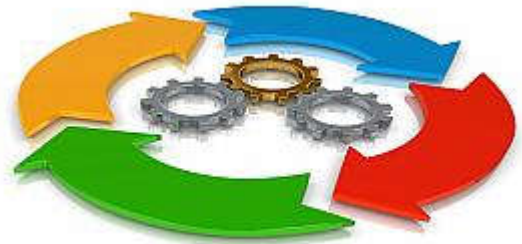
We understand that our main mission in engaging with our customers in Enterprise Architecture initiatives is to translate their vision to day to day operations, a journey that crosses several zones of management.



Our experts are keen to not to disturb the customer's established processes with regard to implementation of the TOGAF Architecture Development Method.

We are aware that many organizations have setup their processes based on institutionalized practices according to one or more of the management frameworks, including but not limited to:

- CMMI
- ITIL
- ISO Standards
- PMBOK
- PRINCE2
- etc.



In our Endeavour to implement your vision, we pay attention to the interfacing between TOGAF activities and your established processes for other frameworks. Our experts specialties spans all management areas. You are in safe hands!

Modeling Method:

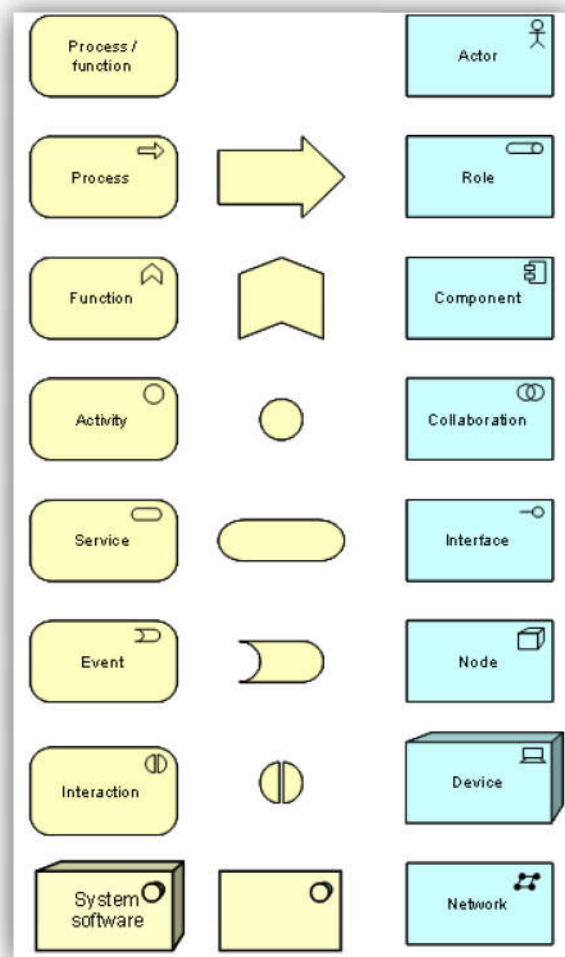
We use state-of-the-art modeling tools based on standard languages, including:

- UML
- ArchiMate
- Business Process Modeling Notation (BPMN)

We develop models to visualize several views of the various architectures from the different viewpoints of the architecture stakeholders.

Integration with the customer Systems:

We are keen for interoperability with the customer's systems in place. We integrate our architecture and modeling tools with the customer existing systems if such requirements will be needed, so that all work products are future-proof for evolvement of the enterprise architecture so that the customer can build on usable work products from the architecture engagements.



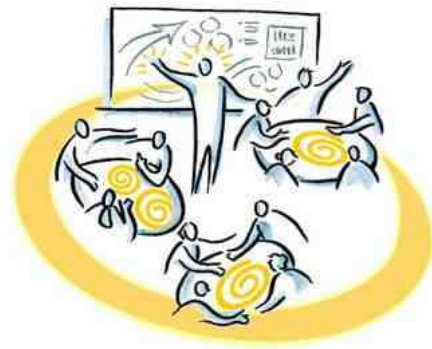
Involvement of the customer staff:

Out of our realization that enterprise architecture establishes wide scale business transformation with changes that may span many organizational units within the subject enterprise, we understand that cultural change is a key factor in success of those initiatives.

The customer staff are also involved in architecture activities within their disciplines to provide essential perspective on the enterprise landscape as key stakeholders of the architecture practice.

Involvement of the customer staff in the enterprise architecture engagement can be on two levels, as agreed with the customer:

- Our consultation firm provides the principal consultant lead architect to lead the architecture development and implementation initiative by facilitation with the customer staff. This is performed by intermittent consultation visits for follow up and guidance, while the onsite staff performs the actual work of the architecture development and implementation.
- The customer may outsource the entire architecture initiative to our firm, and we deal with all architecture development and implementation tasks, including cultural changes for the customer staff through briefings and orientations. This may require long term onsite presence of our team at the customer premises.



Contact Us

The OneWayForward Inc.

A Sole Proprietary Management Consultation Firm

Mailing Address: Post Box #112, Sheikh Zayed Post Office,
6th of October, Giza, Egypt, Postal Code: 12588

Website: <http://www.OneWayForward.com>,

Email: contact@onewayforward.com

Mobile: +2 (0) 111 360 55 33

Commercial License # 42678, Commercial Register # 15731,

Tax ID # 376-625-759, 6th of October, Giza, Egypt

US Tax ITIN: 923-99-9817

